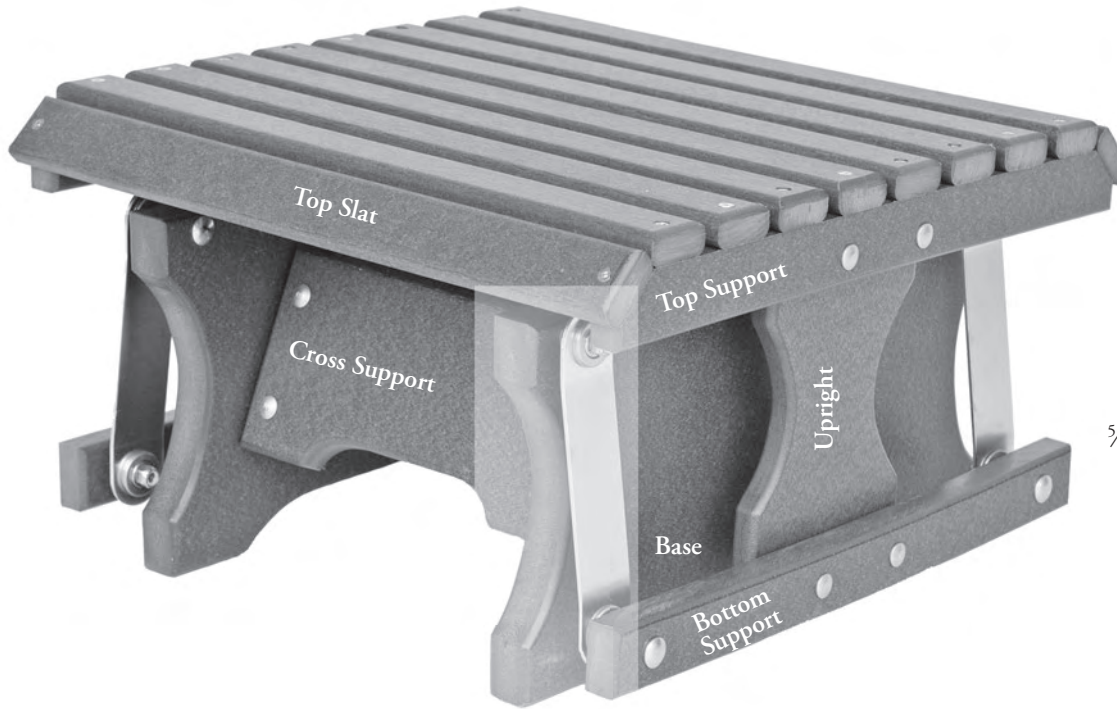
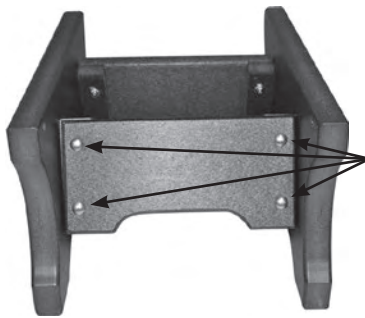
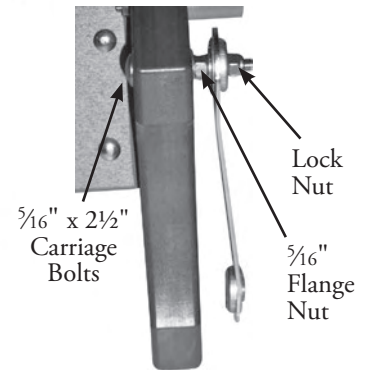


# Assembly Directions for Gliding Footstool

#PVGF2100



*Glider Bracket  
Diagram*



**STEP #1 -** Fasten the Cross Supports to the Base using  
8- 1/4" x 2" Carriage Bolts

1/4" x 2" Carriage Bolts

**PACKAGE CONTENTS**

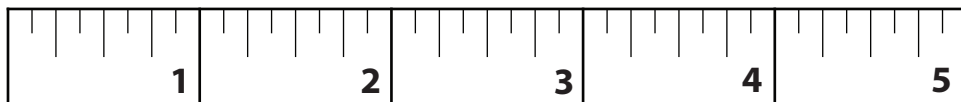
- 1 Top
- 2 Bases
- 2 Cross Supports
- 2 Uprights
- 2 Bottom Supports
- 4 Stops
- 1 Hardware Package
- 1 Glider Bracket Package

**HARDWARE PACKAGE**

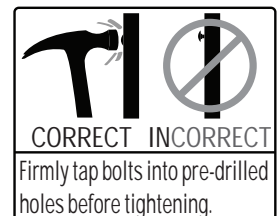
- 4 5/16" x 2 1/2" Carriage Bolts
- 4 5/16" x 2" Carriage Bolts
- 16 1/4" x 2" Carriage Bolts
- 4 1/4" x 3" Carriage Bolts
- 8 5/16" Lock Nuts
- 8 5/16" Flange Nuts
- 20 1/4" Flange Nuts
- 4 Glider Brackets
- 4 5/16" Acorn Nuts

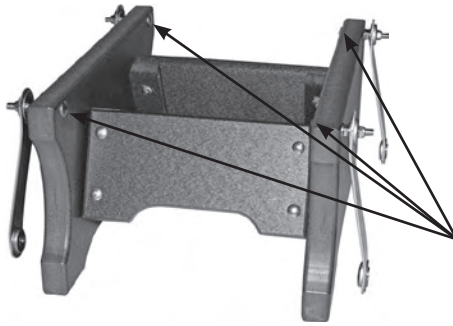
**TOOLS NEEDED:**

- Hammer
- 1/2" Wrench
- 7/16" Wrench



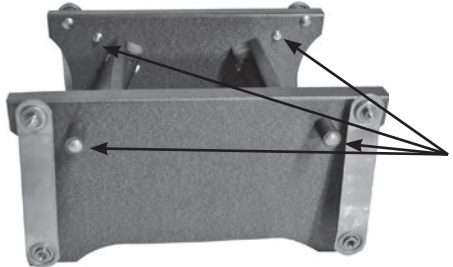
Use to measure bolts





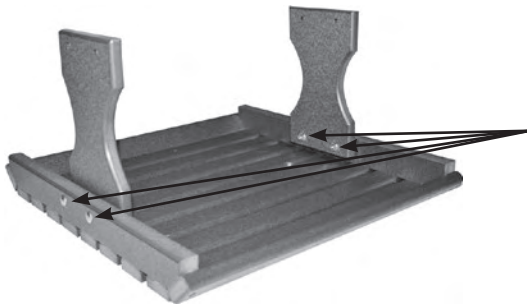
**STEP #2 -** Install the 4-  $\frac{5}{16}$ " x  $2\frac{1}{2}$ " Carriage Bolts into the pre-drilled holes and fasten the Glider Brackets (see Glider Bracket Diagram).

$\frac{5}{16}$ " x  $2\frac{1}{2}$ " Carriage Bolts



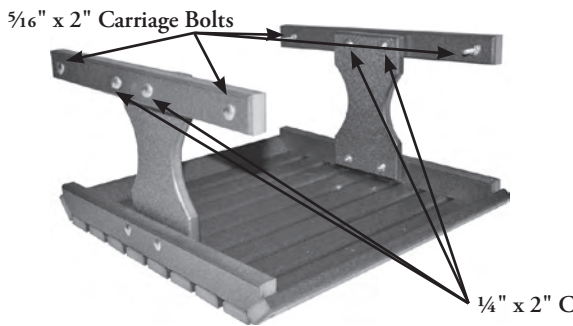
**STEP #3 -** Attach the Glider Stops to the Glider Base using 4-  $\frac{1}{4}$ " x 3" Carriage Bolts.

$\frac{1}{4}$ " x 3" Carriage Bolts



**STEP #4 -** Fasten the Uprights to the Top using 4-  $\frac{1}{4}$ " x 2" Carriage Bolts.

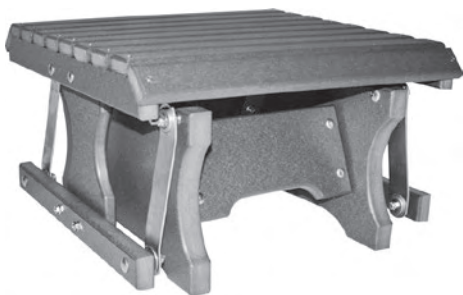
$\frac{1}{4}$ " x 2" Carriage Bolts



**STEP #5 -** Fasten the Bottom Supports to the Uprights using  $\frac{1}{4}$ " x 2" Carriage Bolts. Second install the  $\frac{5}{16}$ " x 2" Carriage Bolts into the pre-drilled holes.

$\frac{1}{4}$ " x 2" Carriage Bolts

$\frac{5}{16}$ " x 2" Carriage Bolts



**STEP #6 -** Attach the Top Assembly to the Glider Brackets and secure with  $\frac{5}{16}$ " Lock Nuts. (See Glider Bracket Diagram.)